

35. Walter Runeberg Sculpture Collection
Aleksanterinkatu 5, Porvoo
Over a hundred works of art and studies, mainly plaster sculptures, on themes from the mythology of antiquity by Walter Runeberg (1838–1920), who was the son of J.L. Runeberg. There is also a large portrait gallery. Open throughout the year. Guided tours by arrangement. Admission fee. Tel: +358 (0) 19 582 186

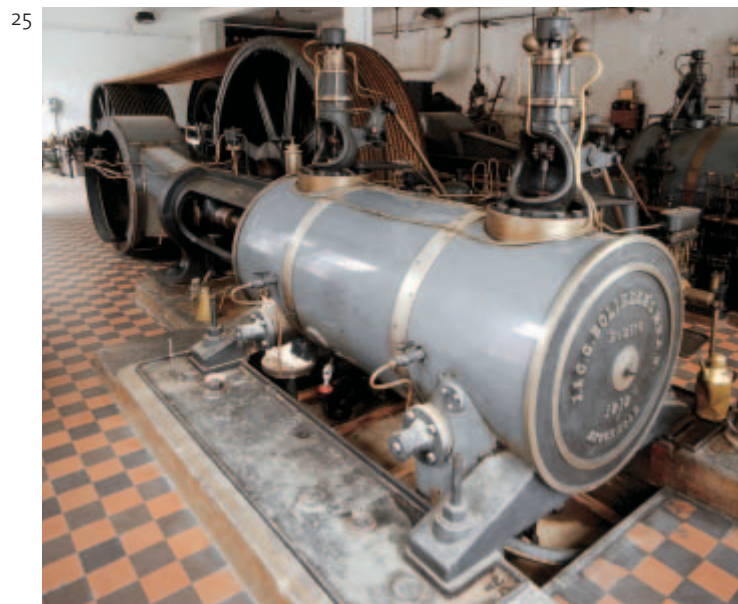
36. Outboard Museum
Jokikatu 14, Porvoo
In the museum, situated in one of the granaries on the river bank of Old Porvoo, there is, in addition to the exhibition area, a portrayal of what an outboard repair shop of the 1950's looked like. Open Sat–Sun during summer. Tel: (09) 811 34 or 040 513 06 00

37. Doll and Toy Museum of Porvoo
Jokikatu 14, Porvoo
This privately owned museum presents dolls and toys from various European countries dating from the 18th century to the 20th. Open during summer (not Fri), also by arrangement. Groups also on Fridays. Admission fee. Tel: (019) 58 29 41, 050 910 20 30, 040 501 50 06, www.lelumuseo.com



38

38. Porvoo Museum, Historical Museum
Vanha Raatihuoneentori, Porvoo
This museum is located in the old Town Hall (1764) and presents the history and culture of the Porvoo district. Special exhibition on Medieval Porvoo. Open throughout the year and by arrangement. Guidance by arrangement. The museum will be refurbished in 2007–2009. Admission fee. Tel: (019) 574 75 00 office, (019) 574 75 80 Historical Museum, www.porvoonmuseo.fi



25

39. Porvoo Museum, Edelfelt-Vallgren Museum
Välikatu 11, Porvoo
The art museum (1762) has a considerable collection of works by Albert Edelfelt, Ville Vallgren and Johan Knutson, as well as examples of the Iris Factory's output between 1897 and 1902: Louis Sparre's furniture and A.W. Finch's ceramics. Open throughout the year and by arrangement. Guidance by arrangement. The museum will be refurbished in 2005–2007. Admission fee. Tel: (019) 574 75 00 office, (019) 574 75 89 Edelfelt-Vallgren Museum www.porvoonmuseo.fi

40. Yrjö A. Jäntti's Art Collection
Papinkatu 19, Porvoo
Works collected by Yrjö A. Jäntti (1905–85), longterm CEO of WSOY publishing company. Collection includes Finnish paintings, miniature sculptures, graphics and drawings. Open Wed–Sun throughout the year. Guidance by arrangement. Tel: (019) 524 59 90



40

41. Porvoo Museum of Natural History
Kaivokatu 40, Porvoo
The only museum in East Uusimaa dedicated to natural history. Zoological, botanical and butterfly collections as well as geological items. Open Mon–Fri throughout the year. Tel: (019) 523 17 00



41



34



Museums in East Uusimaa
www.ita-uudenmaanmuseot.com



EUROPEAN COMMISSION
European Regional Development Fund



Regional Council of Itä-Uusimaa

INFORMATION:

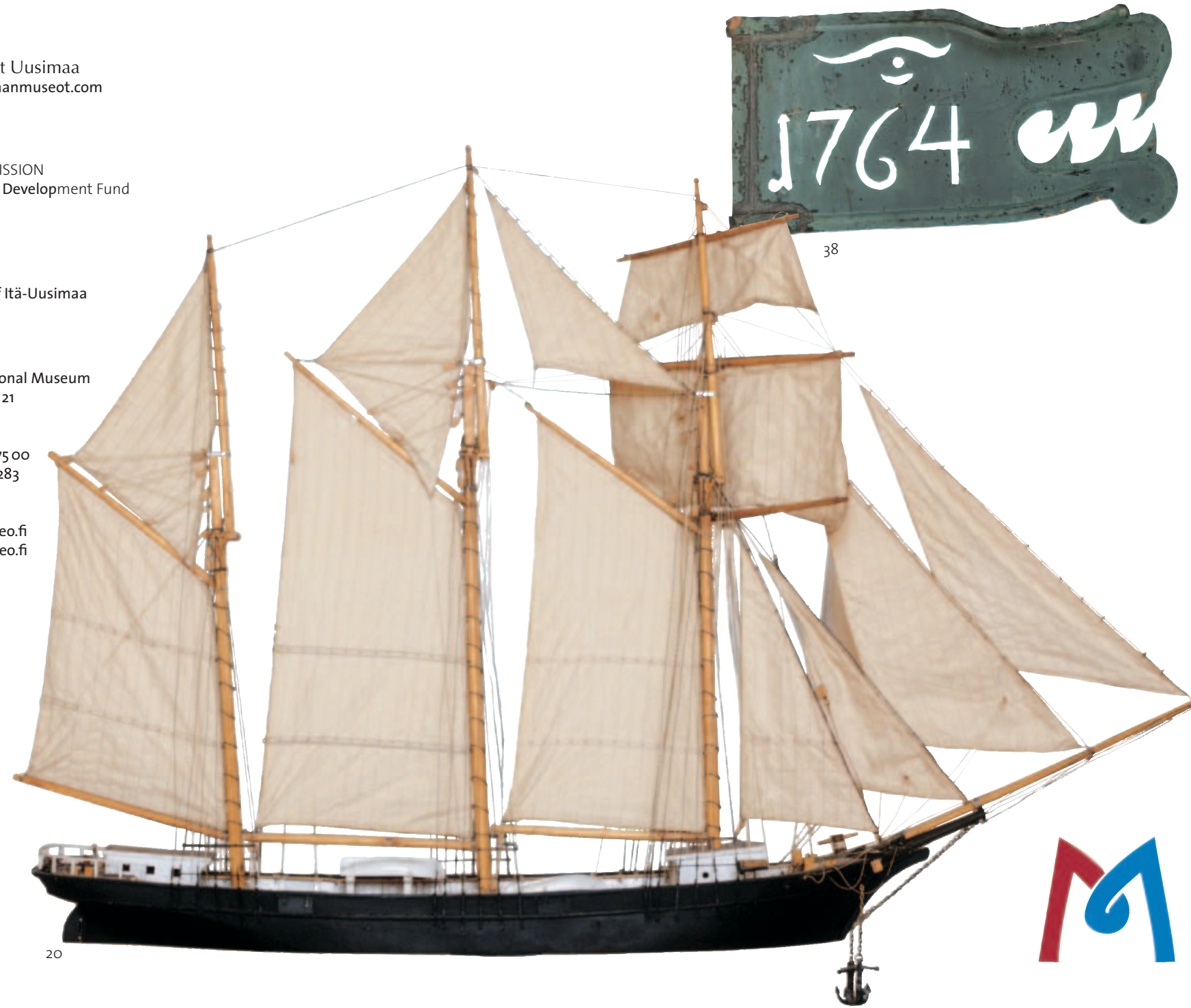
Porvoo Museum,
East Uusimaa Regional Museum
Raatihuoneenkatu 21
FIN-06100 Porvoo
Finland
Tfn +358 (0) 19 574 75 00
Fax +358 (0) 19 582 283

Email:
info@porvoonmuseo.fi
www.porvoonmuseo.fi

Photographs:
Porvoo Museum
Ilmari Elo
Sten Enbom
Henry Forssell
Peter Karanen
Sami Lassila
Jan Lindroth
Per-Inge Nordström
Foto Mauritz
Raine Nylund
Seppo Palviainen
Pentti Urhonen
Pia Wilhelmson

Graphic designer:
Paula Jääskeläinen

tt-urex, Porvoo 2005



38

20



Museums in East Uusimaa



35

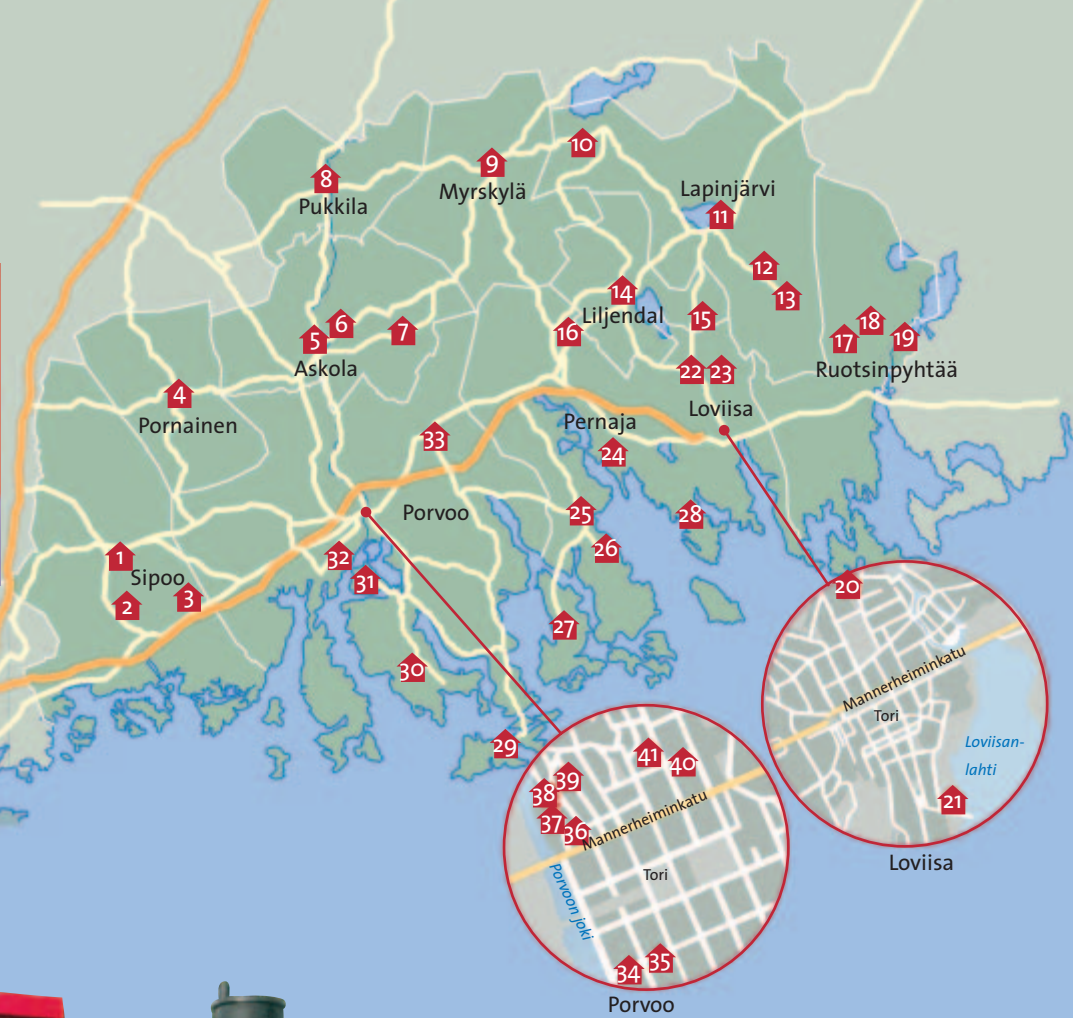
This brochure provides basic information about the museums in the East Uusimaa province, from Sipoo to Ruotsinpyhtää. The museums of East Uusimaa exhibit special features of the region; countryside, archipelago, prominent personalities, bilingual items etc. A major part of the museums comprises museums of cultural history but some of them are also specialised museums, art collections, and one of them is a natural science museum. The Porvoo Museum is a regional museum. This brochure is one of the examples of museum cooperation. For exact opening hours, please check www.ita-uudenmaanmuseot.com or phone the number of the museum of your interest.



37



21



SIPOO

1. Sipoo Agricultural Museum
Beside the new church in Nikkilä, Sipoo
The museum is dedicated to horse-drawn farm machinery and was founded in 1983.
Open by arrangement. Guidance.
Admission fee. Tel: (09) 877 99 41

2. Sibbesgården Museum
Gesterbyntie 30, Gesterby, Sipoo
This open-air museum, founded in 1937, contains two crofts, Matbackatsugan (1804) and Fram-Martistugan (1787) and several outbuildings. The furniture and artefacts in the crofts are typical of the period and were collected from the surrounding villages.
Open Sun during summer. At other times by arrangement. Guidance. Admission fee.
Tel: (09) 877 99 41

3. Sipoo Schoolmuseum
Massbyntie 91 (beside Ingman Foods), Sipoo
The museum is located in a former primary school house in southern Sipoo. One of the classrooms is furnished in old style: desks, harmonium, wall bars, cupboards etc. In addition, drawings and handicraft by the pupils are exhibited.
Open by arrangement. Admission fee.
Tel: (09) 23 53 70 03

PORNAINEN

4. Pornainen Parish Museum
Beside the church, Kirkonkylä, Pornainen
Ecclesiastical objects, as well as photographs, tools and other artefacts from the district are on display.
Open Sun during summer. At other times by arrangement. Tel: (019) 664 80 11

2

3

5

6

8

9

8

11

13

15

20

21

22

23

26

32

33

38



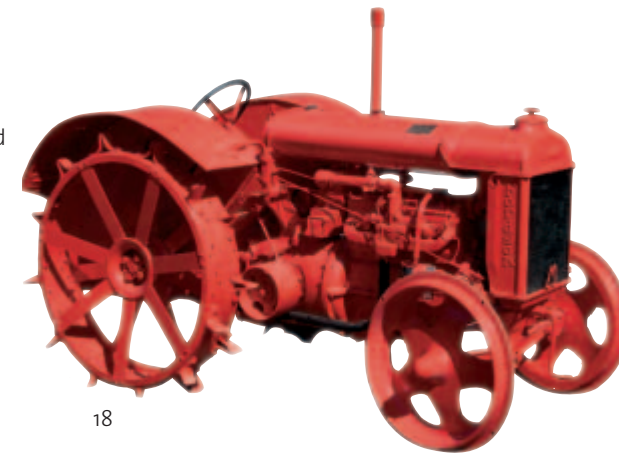
4



10



17



18



20

PERNAJA

22. Lurens
Lurensintie 121, Hardom, Pernaja
A farm house with interiors from the second half of the 19th century. It has been used by local theatre groups since 1964.
Open during performances at the Lurens Summer Theatre. Other times and guided tours by arrangement. Tel: (019) 53 24 12

23. East Uusimaa Coach Museum
Lurensintie 121, Hardom, Pernaja
The collections of the museum consist, among other things, of horse-drawn vehicles and relevant tools from the area. In 2006–2007 the museum will be moved to Lurens.
Open with guidance by arrangement.
Tel: (019) 53 24 12

24. Pernaja Veteran Museum
Opposite the church, Pernajantie 307, Kirkonkylä, Pernaja
The museum presents local objects associated with the war of 1939–45 and the home front. The collection consists mainly of hobby crafts, uniforms, books, photographs and medals, as well as a miniature model of a wartime trench. **Open Sun during summer. At other times by arrangement. Guidance.** Admission fee. Tel: (019) 50 92 02, 040 581 77 24, 050 307 99 07



24

LOVIISA

20. Loviisa Town Museum
Puistokatu 2, Loviisa
The museum was founded in 1904 and in 1964 relocated to the so-called Commandant's House dating from 1755. The items in the collection mainly date from the 18th and 19th centuries and relate to the history of the city and the livelihoods of its inhabitants, especially seafaring and handicraft. The exhibits include the last pewter's workshop in Finland, in addition to textiles, furniture, glass and china. A special exhibition presents the time when composer Jean Sibelius stayed in Loviisa and the time when the town was a spa. Household and decoration plants typical of the 18th and 19th centuries are cultivated in the Commandant's Garden (founded in 1998) with the purpose of showing and describing the use of these plants. **Open throughout the year. Admission fee.** Tel: (019) 61 96 32 or 0400 15 28 58 <http://kotisivu.dnainternet.net/jokotimu>

19. Viirilä Local Museum
Höjmusantie 4, Kuninkaankylä, Ruotsinpyhtää
The museum area exhibits the farm life and handicraft of the past centuries in this local area. It is tightly connected with the village of Viirilä and its agricultural traditions. The harmonious view to the fields opening from the attractive courtyard is very typical of the Ruotsinpyhtää area. **Open Sat–Sun during summer. At other times by arrangement.** Tel: (019) 557 72 50, or Municipality of Ruotsinpyhtää (019) 55 77 00, www.ruotsinpyhtaa.fi

21. Museum of Seafaring
Laivasilta 8, Loviisa
The Museum of Seafaring at the Laivasilta Marina is maintained by a local foundation. The building was constructed in the style of old salt stores. The museum also owns the tugboat Onni. Special exhibition. **Open Tue–Sun during summer. Guidance for groups by arrangement.** Admission fee. Tel: During opening hours (019) 53 31 88, at other times (019) 53 13 22.

12. Hindersby-Bäckby Village Forge
Hopenbacksvägen 47, Heikinkylä, Lapinjärvi
The forge is divided into three sections, for general, horseshoeing and sheet metal work. Three generations of smiths from the same family worked here for nearly a century. Their tools are on display.
Open during summer by arrangement. Admission fee.
Tel: (019) 61 40 97, (019) 61 40 74

13. Hurtig's Croft
Blåsbacken, Heikinkylä, Lapinjärvi
The dragoon Anders Hurtig (1770–1848), who fought in the Russo-Swedish wars of 1788–90 and 1808–1809, lived in this croft, which had a chimneyless smoke sauna and a small herb garden attached to it. The furniture and artefacts on display were collected from houses in the village.
Open during summer by arrangement. Voluntary admission fee.
Tel: (019) 61 40 97, (019) 61 40 56

14. Liljendal Local Museum
Near the cemetery chapel, Rumpilantie 14, Sävträsk, Liljendal
The artefacts in the museum, which is housed in an old granary, relate to farming and household work, in addition to which there are wooden objects and furniture. The workshop and Veterans Corner attached to it were fitted out in 1996.
Granary and Veterans Corner open by arrangement.
Tel: (019) 61 60 20 or (019) 51 81 41, Veterans Corner tel: (019) 51 21 50. Guidance by arrangement.

LAPINJÄRVI
10. Porlammi Local Museum
Kievarintie 27, Porlammi, Lapinjärvi
The museum was transferred to its present home, an old granary, in 1965. The exhibits include household utensils, furniture and tools. The site also includes a school museum, a small barn and a garage with several outbuildings.
Open Sun during summer. At other times both groups and guided tours by arrangement. Admission fee. Tel: 0400 85 20 46, (019) 61 20 30

7. Prestbacka Farm and Pharmacy Collection
Lassbackantie 35, Huuvvari, Askola
Agricultural tools from the Prestbacka and Anttila farms from the beginning of the 19th century. Furniture items and objects from the first pharmacy in Askola, founded in 1949.
Open throughout the year by arrangement. Admission fee. Tel: 0400 80 48 83

PUKKILA

8. Pukkila Local Museum
Koivullinnantie 1, Kirkonkylä, Pukkila
The basic collection in the two outbuildings consists mainly of agricultural tools, household utensils, furniture and textiles. There are also cowsheds, chimneyless smoke saunas and a coach shed. Even shoemaker's tools are exhibited in the showcase.
Open Wed–Sun during summer. The granary open by arrangement. Admission fee. Café.
Tel: 040 523 68 78, during summer also 040 571 41 79.

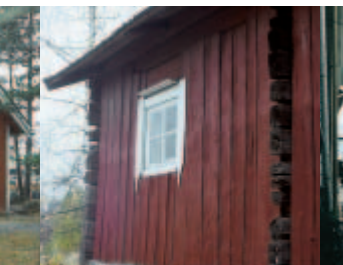
MYRSKYLÄ

9. Myrskylä Local Museum
Keskustie 5, Kirkonkylä, Myrskylä
The museum has been housed in two granaries beside the church since 1963. Its collections comprise farm machines and implements, household utensils, furniture, handicrafts and textiles.
Open Sun during summer.
Tel: (019) 510 85 53 or (019) 51 08 50.

ASKOLA

5. Johannes Linnankoski's Childhood Home
Niemenpellontie 1, Vakkola, Askola
The museum is dedicated to the writer, patriot and popular educator Johannes Linnankoski who is said to have been born in the sauna building which was since transferred to this site.
Open Wed–Sun during summer. At other times by arrangement. Guidance. Admission fee.
Tel: (019) 52 91 00, Municipality of Askola

6. Askola Local Museum
Beside the church, Naikkilantie 4, Kirkonkylä, Askola
The collections relate to rural life in the first half of the 20th century. There is also a section presenting prehistoric items.
Open Sun during summer. Guidance. Admission fee.
Tel: (019) 663 03 06, 040 511 61 91, Municipality of Askola (019) 52 91 00



31

31. Kråkö Boat-builders Museum
Kråkönympyrä 240, Porvoo
Over 200 tools and photographs describe the tradition of boat-building on the Kråkö Island.
Open Sat during summer or by arrangement. At other times and guidance by arrangement. Admission fee.
Tel: (019) 54 41 70, 040 582 87 11

32. Albert Edelfelt Studio Museum
Edelfeltinpolku 3, Haikkoo, Porvoo
Built for the artist Albert Edelfelt in 1883. Every summer he returned to the studio from Paris and painted several of his best known works there.
Open Tue–Sun during summer. Guidance. Admission fee. Tel: (019) 577 414, when the museum is closed 040 552 90 83

33. Postimäki
Vanha Viipurintie 12, Ilola, Porvoo
An open-air museum with ten well-preserved hillside crofts and their 19th century contents. Exhibitions of articles made of straw.
Open by arrangement. Admission fee.
Porvoo Tours tel (019) 574 22 00.

34. The Home of J.L. Runeberg
Aleksanterinkatu 3, Porvoo
Finland's national poet Johan Ludvig Runeberg (1804–77) and his family lived in this house from 1852 to his death. The oldest Finnish museum dedicated to the history of a person, it was opened to the public in 1882.
Open throughout the year. Admission fee. Reservations only by telephone.
Tel: +358 (0) 19 581 330, www.porvoo.fi
www.runeberg.net

31

32

33

38